

**NSO Class 04**

Total Questions: 35

Time: 60 min

**1. Which of these materials is an excellent conductor of both heat and electricity, commonly used in electrical wiring?**

- A) Plastic B) Wood C) Copper D) Glass

**2. What is the process called when a liquid changes into a gas below its boiling point, often observed on wet clothes drying?**

- A) Boiling                      B) Melting  
C) Evaporation                D) Condensation

**3. Which part of the plant is primarily responsible for absorbing sunlight to make food through photosynthesis?**

- A) Root cap    B) Stomata  
C) Leaf blade    D) Sepal

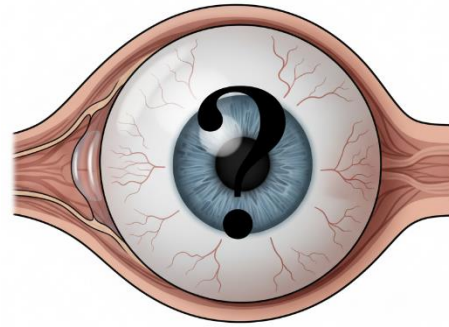
**4. A car travels at a constant speed, but then accelerates. What must have happened to its kinetic energy?**

- A) It decreased  
B) It remained the same  
C) It increased  
D) It became potential energy

**5. Which of the following is a nocturnal bird of prey with excellent night vision and hearing, often hunting small rodents?**

- A) Eagle B) Parrot C) Owl D) Sparrow

**6. Look at the image showing different parts of the human eye. Which part controls the amount of light entering the eye?**



- A) Cornea B) Pupil C) Retina D) Lens

**7. When you strike a match, what form of energy is initially stored in the matchstick and then released as heat and light?**

- A) Mechanical energy  
B) Electrical energy  
C) Chemical energy  
D) Nuclear energy

**8. Which natural phenomenon is caused by the sudden shifting of the Earth's tectonic plates?**

- A) Tornado    B) Flood  
C) Earthquake D) Tsunami

**9. What is the main function of the blood vessels (arteries, veins, capillaries) in the circulatory system?**

- A) To produce blood  
B) To filter blood  
C) To transport blood throughout the body  
D) To pump blood

**10. If you place a spoon in a hot cup of tea, the handle of the spoon also gets hot. This is an example of heat transfer by:**

**NSO Class 04**

Total Questions: 35

Time: 60 min

A) Radiation    B) Convection

C) Conduction    D) Evaporation

**11. Which of these insects undergoes complete metamorphosis (egg, larva, pupa, adult)?**

A) Grasshopper                      B) Butterfly

C) Cockroach                         D) Dragonfly

**12. What is the primary role of decomposers (like bacteria and fungi) in an ecosystem?**

A) To produce food

B) To consume other animals

C) To break down dead organisms and return nutrients to the soil

D) To provide shelter for other animals

**13. Which planet in our solar system is known for its prominent red spot, a giant storm larger than Earth?**

A) Mars    B) Jupiter    C) Saturn    D) Neptune

**14. What causes the sound we hear?**

A) Light waves                      B) Vibrations

C) Heat waves                        D) Magnetic fields

**15. A plant's roots grow downwards, towards gravity. This response to gravity is called:**

A) Phototropism                      B) Geotropism

C) Hydrotropism                      D) Thigmotropism

**16. Which of these is a non-renewable resource that was formed from the remains of ancient marine organisms over millions of years?**

A) Solar energy                      B) Wind energy

C) Petroleum

D) Wood

**17. What type of adaptation allows certain animals to blend in with their surroundings to avoid predators or ambush prey?**

A) Mimicry

B) Hibernation

C) Camouflage

D) Migration

**18. The tiny air sacs in the lungs where oxygen enters the blood and carbon dioxide leaves the blood are called:**

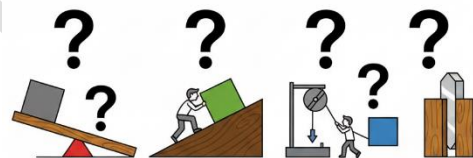
A) Bronchi

B) Trachea

C) Alveoli

D) Diaphragm

**19. Look at the image showing different types of simple machines. Which simple machine is used to lift heavy objects with less effort by wrapping a rope around a wheel?**



A) Lever

B) Inclined Plane

C) Pulley

D) Wedge

**20. Which of these is a characteristic feature of mammals?**

A) They lay eggs

B) They have feathers

C) They feed milk to their young

D) They breathe through gills



GG RS LEARNING HUB PVT. LTD.

## NSO Class 04

Total Questions: 35

Time: 60 min

**21. What happens to the water cycle if there is a long period of drought (very little rain)?**

- A) Evaporation increases dramatically
- B) Condensation stops completely
- C) Precipitation decreases, leading to less collection of water
- D) Transpiration increases

**22. Which gas makes up the largest percentage of the air we breathe?**

- A) Oxygen      B) Carbon Dioxide
- C) Nitrogen    D) Argon

**23. What is the main reason why we use lenses in eyeglasses or magnifying glasses?**

- A) To make objects appear darker
- B) To absorb light
- C) To bend light to make objects appear clearer or larger
- D) To reflect light

**24. Which type of force causes an object to slow down or stop when it slides across a surface?**

- A) Gravity      B) Magnetic force
- C) Friction     D) Elastic force

**25. What is the name of the process by which a plant's roots absorb water and minerals from the soil?**

- A) Photosynthesis      B) Respiration
- C) Absorption          D) Transpiration

**26. Which of the following is a unit of measurement for length?**

- A) Liter    B) Kilogram    C) Meter    D) Second

**27. What is the function of the outer ear (pinna)?**

- A) To make sounds
- B) To help us balance
- C) To collect sound waves
- D) To send signals to the brain

**28. If you want to make a strong electromagnet, what materials would you primarily need?**

- A) Plastic rod and string
- B) Wooden stick and glue
- C) Iron core, insulated wire, and a battery
- D) Glass rod and a rubber band

**29. Which phase of the moon occurs when the entire side of the Moon facing Earth is illuminated by the Sun?**

- A) New Moon                  B) Half Moon
- C) Full Moon                 D) Crescent Moon

**30. Which of these is a way that humans can help prevent soil erosion?**

- A) Cutting down more trees
- B) Plowing fields up and down hills
- C) Planting more trees and grass
- D) Pouring chemicals into the soil

**31. What is the main component of Earth's core?**

- A) Rocks                      B) Liquid water
- C) Iron and nickel          D) Gases

NSO Class 04

Total Questions: 35

Time: 60 min

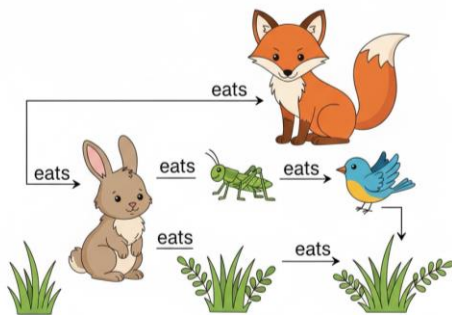
**32. Which of these animals is an amphibian?**

- A) Dolphin
- B) Crocodile
- C) Salamander
- D) Penguin

**33. What is the outermost layer of the Earth called?**

- A) Mantle
- B) Core
- C) Crust
- D) Atmosphere

**34. Look at the image showing a food web. If the population of rabbits suddenly decreases, what might happen to the population of foxes?**



- A) It would increase
- B) It would decrease
- C) It would stay the same
- D) It would start eating plants

**35. Which type of energy is stored in a stretched rubber band or a compressed spring?**

- A) Kinetic energy
- B) Gravitational potential energy
- C) Elastic potential energy
- D) Chemical energy