



GG RS LEARNING HUB PVT. LTD.

NSO CLASS 1

Total Questions: 35

Time: 1 hr.

Section – 1 : Patterns, Odd One Out, Measuring Units, Geometrical Shapes, Spatial Understanding, Grouping, Analogy, Ranking Test, Problems based on Figures.

Section – 2 : Living and Non-living Things, Plants, Animals, Human Beings and Their Needs, Good Habits and Safety Rules, Air and Water, Weather and The Sky.

Section – 3 : Higher Order Thinking Questions - Syllabus as per Section – 2.

SECTION 01 LOGICAL REASONING

1. There are 80 flowers in the park comprising roses, lilies, and marigolds. If there are 25 roses and 40 lilies, find the number of marigolds.

a. 15
b. 25
c. 20
d. 30

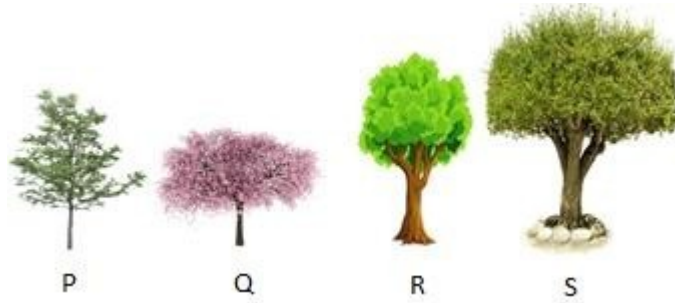
2. Number name for 214 is:

a. Two one and four
b. Two hundred and four
c. Two hundred and fourteen
d. Two hundred and fifteen

3. Which of these shapes should be combined with the given shape to form a circle?



4. Arrange these trees in increasing order of their heights:



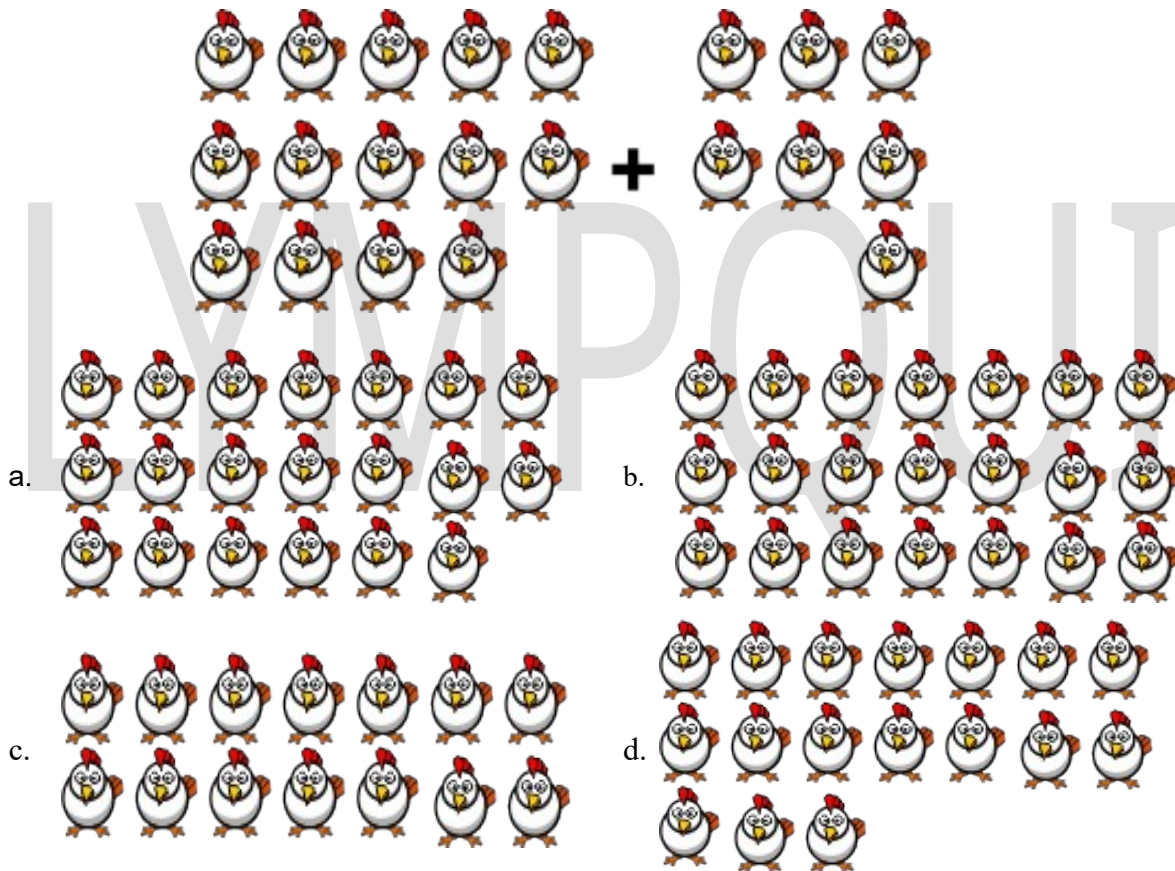
a. $P > Q > R > S$

c. $Q < P < R < S$

b. $Q > P > R > S$

d. $Q < R < P < S$

5. Look at the image given below and add:



SECTION 02 SCIENCE

6. Read the following statements and choose which of them are good habits:

1. We should not spit in parks and on roads and walls.
2. We should eat food bought from the roadside vendors.
3. We should use computers and mobile phones for a long time as they do not harm our eyes.
4. We must brush our teeth twice a day.

a. 1 and 4

b. 2 and 3



GG RS LEARNING HUB PVT. LTD.

c. 3 and 4

d. 2 and 4

7. David wrote the following two statements on the blackboard about living and non-living things:

1. Toys feel pain if we pinch or twist them.
2. Only non-living things need food and air.

Choose the correct option regarding the above two statements:

- a. Statement 1 is correct but statement 2 is incorrect
- b. Statement 1 is incorrect but statement 2 is correct
- c. Both the statements are correct
- d. Both the statements are incorrect

8. Read and state whether the following sentences are true or false:

1. If we do not know how to swim, then we should use floaters.
2. Support, in the form of a cloth or bandage, provided to fractured or sprained arm is called a splint.

- a. 1-False, 2-False
- c. 1-True, 2-False

- b. 1-True, 2-True
- d. 1-False, 2-True

9. Study the given image and identify the property of air it is showing:



- a. Air occupies space.
- c. Air has weight.

- b. Air moves things.
- d. Air is required for burning.

10. Which sense organ is the lady using to know the fragrance of the flower in the given picture?



- a. Ear
- c. Nose

- b. Eye
- d. Tongue

11. Read the given clue and identify the plant:

The seed of my plant is crushed to extract oil which is used for cooking.

a. Coriander

b. Cumin



GG RS LEARNING HUB PVT. LTD.

c. Mint

d. Mustard

12. For which part of the body is the given item used?



a. Eyes

b. Nose

c. Ears

d. Head

13. Which of the following is a solid form of water?

a.



b.



c.



d.



14. Which of the following statements is INCORRECT related to what one should do in a particular season?



a. Wear woollen clothes when it rains a lot.

b. Use an umbrella to keep yourself dry during monsoon.

c. Wear cotton clothes in summer.

d. Drink hot coffee in winter.



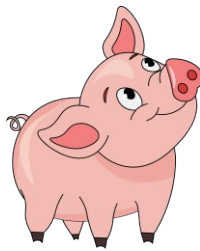
GG RS LEARNING HUB PVT. LTD.

15. Which of the following we should preferably wear for the weather shown in the picture below?



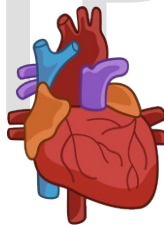
- a. Woollen muffler
- b. Leather jacket
- c. Cotton saree
- d. Raincoat

16. Where does the animal shown in the picture live?



- a. Burrows
- b. Stable
- c. Sty
- d. Coop

17. Which of the following is the function of the human heart?



- a. It helps in the digestion of food.
- b. It controls all the organs of the body.
- c. It pumps the blood throughout the body.
- d. It helps in excreting wastes from the body.

18. Read the following sentences and state whether they are TRUE or FALSE:

1. The touch-me-not plant closes its leaves when touched.
2. A car moves from one place to another so it is a living thing
3. Dogs and humans give birth to young ones.

- a. 1-True, 2-True, 3. True
- b. 1-False, 2-True, 3. False
- c. 1-False, 2-False, 3. False
- d. 1-True, 2-False, 3. True

19. Identify which of the following are an INCORRECT match:

P: Winter - Cotton frock

Q: Summer - Cottonshirt R:

Monsoon - Gumboots S:

Autumn - Raincoat



GG RS LEARNING HUB PVT. LTD.

- a. P and Q
- c. R and S

- b. Q and R
- d. P and S

20. Look at the traffic lights below in the picture.

The yellow light at the traffic signal says_____.



- a. stop
- c. go

- b. get ready
- d. run

21. Fill in the blank:

The picture below shows a_____house.



- a. permanent
- c. dirty

- b. caravan
- d. temporary

22. Which of the following safety rule is INCORRECT?

- a. We should cross the road at the zebra crossing only.
- b. Medicines should be kept away from the reach of small children at home.
- c. We should wash our hands before and after our meals with soap.
- d. When we are swimming in the pool we should swim in the deep end of the pool.

23. Clothes are also a part of human beings basic needs.

Look at the picture given below and complete the following sentence:

The item shown is used for our_____.



- a. eyes

- b. legs

c. hands

d. ears

24. What is the similarity between the two food items shown below?



a. Both are climbers.

b. Both are creepers.

c. Both are trees.

d. Both are shrubs.

25. Read and complete the sentence given below:

The diseases namely cholera, typhoid and jaundice are caused due to_____.

a. air pollution

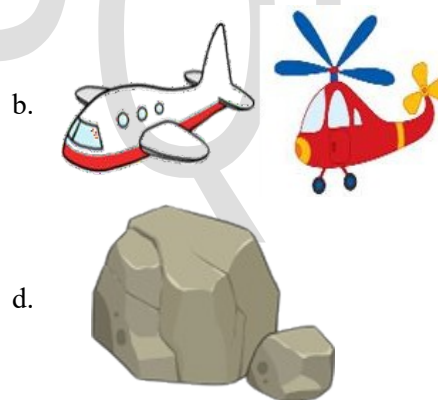
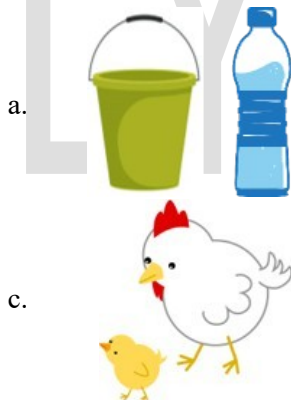
b. soil pollution

c. water pollution

d. noise pollution

26. Choose the correct answer from the options:

"Living things are capable of producing young ones". This statement is best represented by which of the following image?



27. Match column I with column II and select the correct option:

Column I		Column II	
1.	Root	a.	Ginger and Potato
2.	Stem	b.	Carrot and Radish
3.	Leaf	c.	Cucumber and Apple
4.	Fruit	d.	Lettuce and Spinach

a. 1 - b, 2 - a, 3 - c, 4 - d

b. 1 - a, 2 - b, 3 - d, 4 - c

c. 1 - d, 2 - c, 3 - b, 4 - a

d. 1 - b, 2 - a, 3 - d, 4 - c

28. Ana's teacher tells her about an animal with the following characteristics:



GG RS LEARNING HUB PVT. LTD.

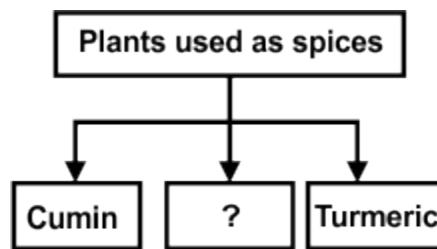
1. It gives milk and meat.
2. It is a domestic animal.
3. Its young one is called a kid.

Anita's teacher then gives her a task to match an animal that shows the same characteristics.

Which animal do you think Ana should choose?

- | | |
|---------|-------------|
| a. Cow | b. Horse |
| c. Goat | d. Kangaroo |

29. Which of the following options can replace the question mark in the given flowchart?



- | | |
|-----------|-----------|
| a. Cotton | b. Coffee |
| c. Clove | d. Rose |

30. Given below is the picture of an animal. Identify the kind of animal it is:



- | | |
|----------------------|--------------------|
| a. Extinct animal | b. Pet animal |
| c. Endangered animal | d. Domestic animal |

SECTION 03 ACHIEVER SECTION

31. Read and state whether the following sentences are true or false:

1. We can save water by not closing the taps after use.
2. We cannot drink water from the sea because it is salty.

- | | |
|--------------------|---------------------|
| a. 1-True, 2-False | b. 1-False, 2-True |
| c. 1-True, 2-True | d. 1-False, 2-False |

32. Ravi classified the items given in the table as shown below:

Paper, Ice-cream, Bridges, Fruits, Books, Cars, Toys
--



GG RS LEARNING HUB PVT. LTD.

D: Man-made things - Cars and bridges

E: Living things - Fruits and ice cream

F: Non-living things - Paper and pen

G: Natural things - Toys and books

Which of the above pairs did he classify incorrectly?

a. E and G

b. D and F

c. D and E

d. F and G

33. Observe the pictures below:

Which of the following belongs to the group of non-living things?



a. Snake, ball, chair and rat

b. Books, rat, parrot and chair

c. Snake, rat, parrot and chair

d. Car, books, ball and chair

34. Match the animals in column I with the food they eat in column II and select the correct option:

Column I		Column II	
1.	Giraffe	a.	Milk
2.	Cat	b.	Leaves
3.	Squirrel	c.	Meat
4.	Cheetah	d.	Nuts

a. 1 - a, 2 - b, 3 - c, 4 - d

b. 1 - a, 2 - c, 3 - d, 4 - b

c. 1 - b, 2 - a, 3 - d, 4 - c

d. 1 - b, 2 - c, 3 - d, 4 - a

35. Look at the pictures given below and identify the similarity between them correctly:



a. Both are used as spices in cooking.

b. Both are cereals.

c. Both are pulses.

d. We make dyes using these seeds.

OLYMP QUIZ